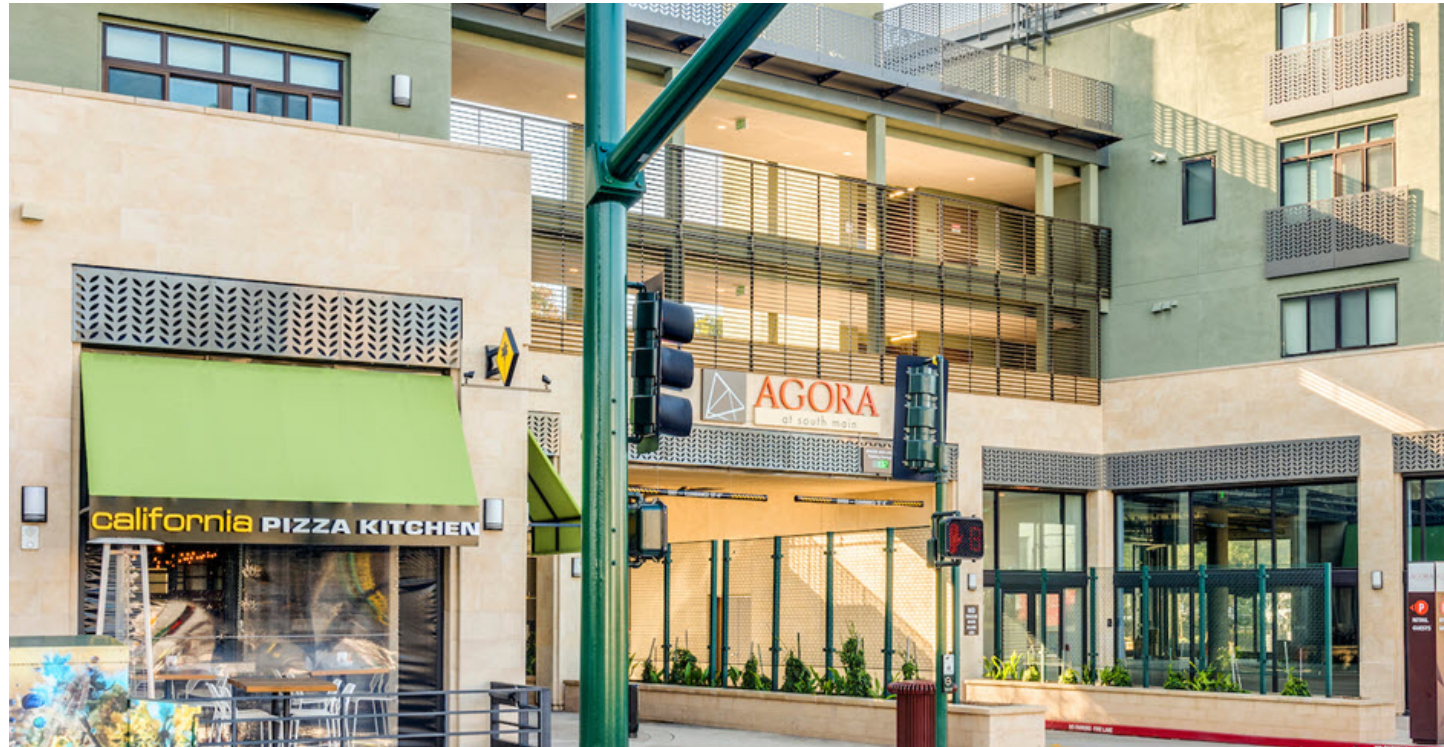


PRIME RETAIL FOR LEASE

Main Street & Newell Avenue Walnut Creek, California

3,240 - 4,988 SF Spaces Available





34,661 SF OF GROUND FLOOR RETAIL SPACE PLUS TWO LEVELS OF UNDERGROUND PARKING

Agora at South Main is a recently built development that provides the last infill opportunity for major retailers seeking a core Walnut Creek location. With over 34,000 SF of ground floor space, the project provides larger format retailers access to the historically impenetrable downtown Walnut Creek market.

Agora at South Main has direct linkage across Main Street to Broadway Plaza and captures the same upscale clientele which shops this premium retail mall. The same educated, affluent trade area that shops Coach, CPK, Apple, and Tiffany & Co. will be at your front door.



THE #1

SHOPPING & DINING
DESTINATION IN THE
EAST BAY

168,368

STRONG DAYTIME
POPULATION CAPTURING
AN AFFLUENT MARKET

2.4M+

SF OF RETAIL & DINING
IN A UNIQUE INVITING
STREETSCAPE



PREMIUM DESIGN AND ARCHITECTURE



Proximate Retailers

- ▶ Pottery Barn
- ▶ Neiman Marcus
- ▶ Nordstrom
- ▶ Tiffany & Co.
- ▶ Anthropologie

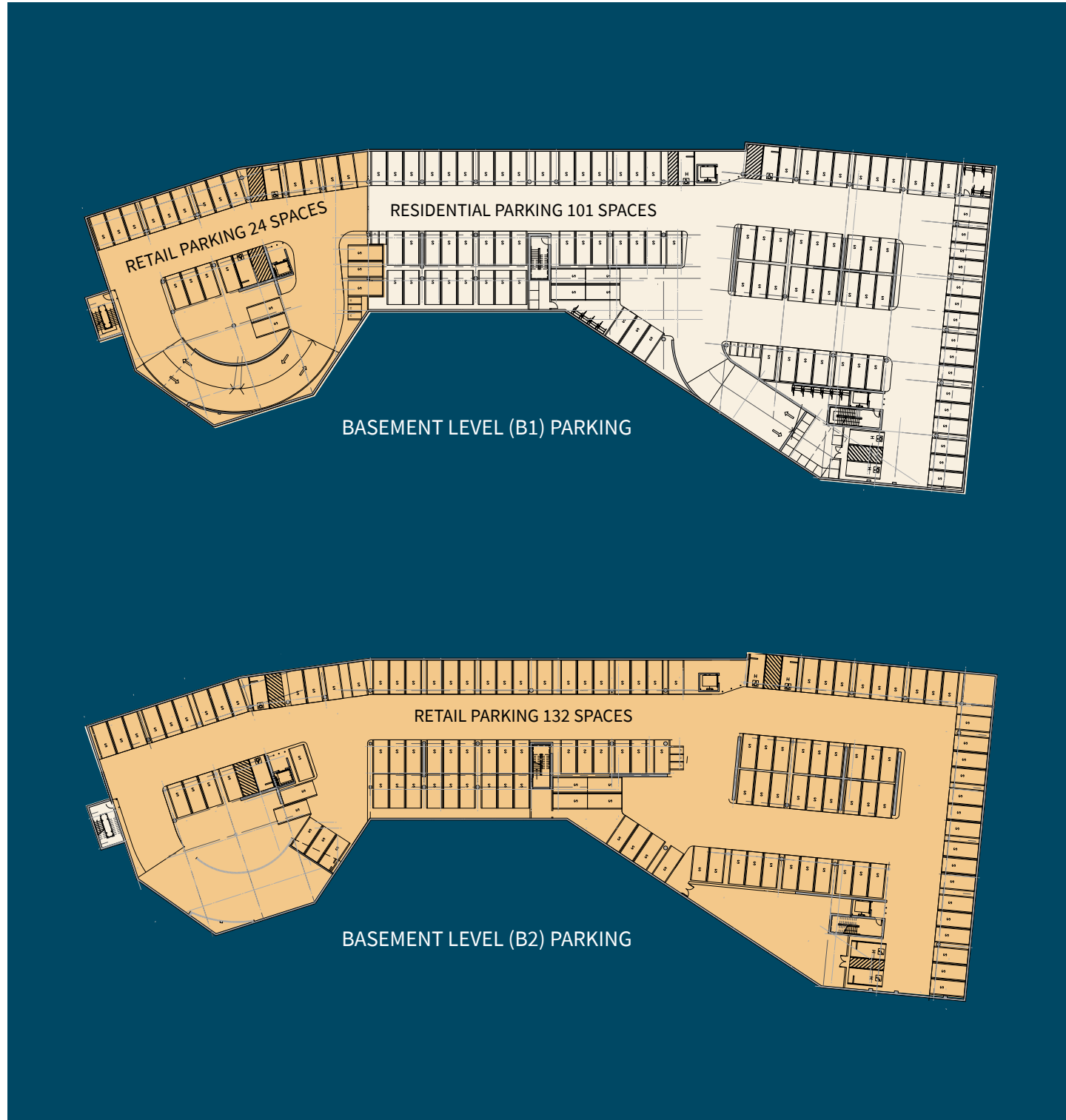
THRIVING RETAIL ENVIRONMENT

Premium Retail Space in Downtown Walnut Creek

- ▶ 34,661 SF of ground floor retail space in Northern California's top retail downtown
- ▶ Anchored by California Pizza Kitchen with prime corner anchor space available. Cotenants include T Mobile, Pacific Catch and The Shade Store
- ▶ Located on Main St, directly opposite Walnut Creek's Broadway Plaza, anchored by Neiman Marcus, Nordstrom, Macys and Crate & Barrel
- ▶ On-site parking for approximately 200 cars
- ▶ Striking, contemporary architecture



CONVENIENT PARKING



SITE PLAN



Tenants

- Pacific Catch
- The Shade Store
- California Pizza Kitchen
- T Mobile

Availabilities

- B - 3,240 SF Available
- D - 4,988 SF Available
- E - 1,700 SF Available



ESSEX
PROPERTY TRUST, INC.

Ben Lazzareschi
Managing Director
+ 1 415 228 3070
ben.lazzareschi@am.jll.com
RE Lic # 01414579

Jeff Badstubner
Managing Director
+1 415 395 4900
jeff.badstubner@am.jll.com
RE Lic # 01155279

