



Retail Space For Lease

The Esplanade

352-395 E TAYLOR STREET, SAN JOSE, CA

±1,350 SF

±345 SF

Matt Sweeney Executive Director (408) 863-1444 | msweeney@theeconiccompany.com | CA RE License #01746896

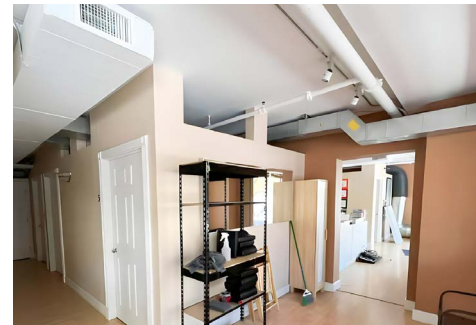
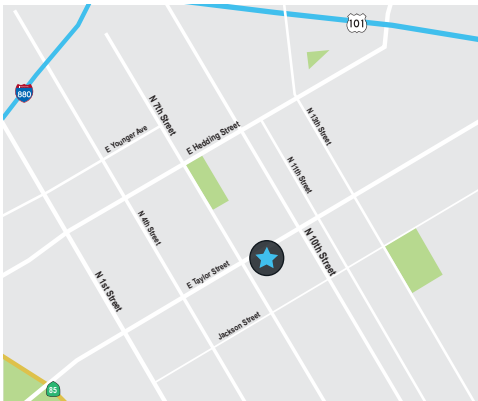
Sean O'Carroll Executive Director (408) 863-1447 | socarroll@theeconiccompany.com | CA RE License #01058587

Ron Cruz Associate (408) 400-7003 | rcruz@theeconiccompany.com | CA RE License #02018499

theeconiccompany.com

Project Highlights & Gallery

- Street Level Retail Suites Available within the Esplanade Apartment Village
- Located in a High Density Residential Core
- 278 Residential Units On Site
- Easy Access to Highway 101 & 87



For information, please contact:

Matt Sweeney

Executive Director

(408) 863-1444

msweeney@theeoniccompany.com

CA RE License #01746896

Sean O'Carroll

Executive Director

(408) 863-1447

socarroll@theeoniccompany.com

CA RE License #01058587

Ron Cruz

Associate

(408) 400-7003

rcruz@theeoniccompany.com

CA RE License #02018499

theeoniccompany.com

Site Plan



For information, please contact:

Matt Sweeney

Executive Director

(408) 863-1444

msweeney@theeoniccompany.com

CA RE License #01746896

Sean O'Carroll

Executive Director

(408) 863-1447

socarroll@theeoniccompany.com

CA RE License #01058587

Ron Cruz

Associate

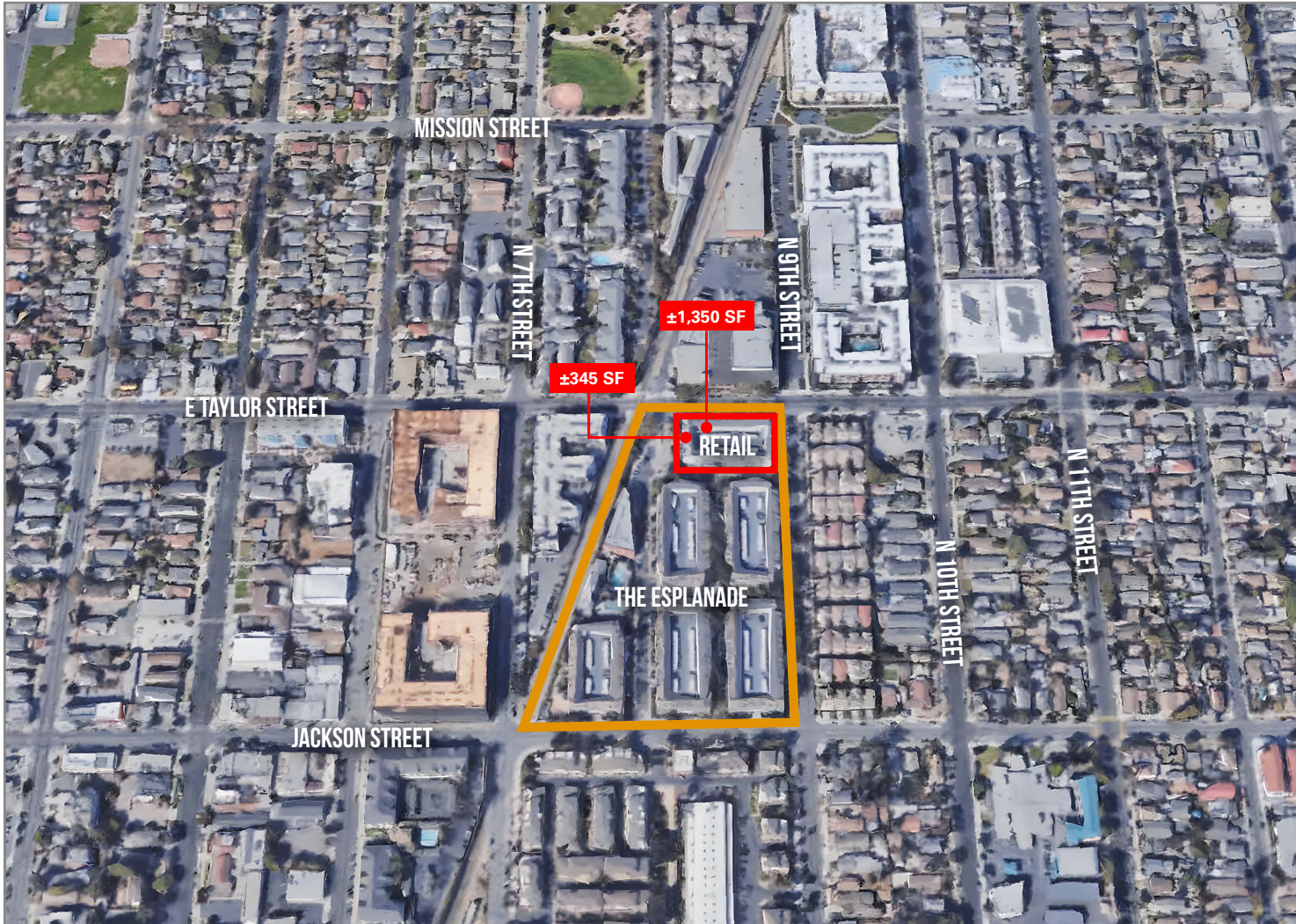
(408) 400-7003

rcruz@theeoniccompany.com

CA RE License #02018499

theeoniccompany.com

Aerial Map



For information, please contact:

Matt Sweeney

Executive Director

(408) 863-1444

msweeney@theeoniccompany.com

CA RE License #01746896

Sean O'Carroll

Executive Director

(408) 863-1447

socarroll@theeoniccompany.com

CA RE License #01058587

Ron Cruz

Associate

(408) 400-7003

rcruz@theeoniccompany.com

CA RE License #02018499

theeoniccompany.com

Amenities Map



For information, please contact:

Matt Sweeney

Executive Director

(408) 863-1444

msweeney@theeconiccompany.com

CA RE License #01746896

Sean O'Carroll

Executive Director

(408) 863-1447

socarroll@theeconiccompany.com

CA RE License #01058587

Ron Cruz

Associate

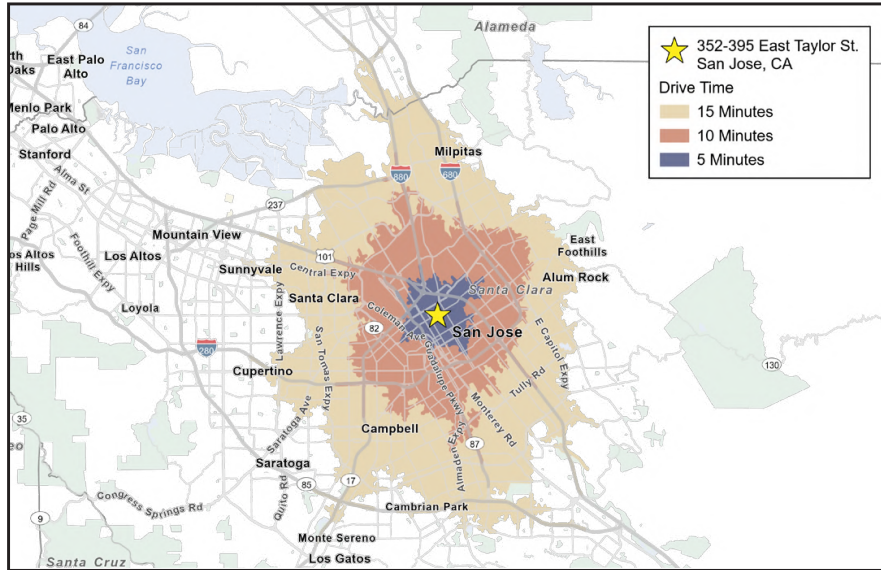
(408) 400-7003

rcruz@theeconiccompany.com

CA RE License #02018499

theeconiccompany.com

Drive Time Demographics



DRIVE TIME DEMOGRAPHICS (2021)	5 Min	10 Min	15 Min
2021 Estimated Total Population	52,558	410,677	1,268,223
2026 Projected Total Population	58,517	432,872	1,317,223
Median Age	34.0	35.1	36.6
Total Households	18,065	134,972	419,906
Total Owner Occupied Housing Units	5,883	57,001	208,911
Total Renter Occupied Housing Units	12,181	77,971	210,994
Median Household Income	\$87,789	\$99,161	\$115,440
Average Household Income	\$126,728	\$136,957	\$152,242
Per Capita Income	\$44,330	\$44,951	\$50,477
Average Household Size	2.61	2.93	2.97

For information, please contact:

Matt Sweeney

Executive Director

(408) 863-1444

msweeney@theeoniccompany.com

CA RE License #01746896

Sean O'Carroll

Executive Director

(408) 863-1447

socarroll@theeoniccompany.com

CA RE License #01058587

Ron Cruz

Associate

(408) 400-7003

rcruz@theeoniccompany.com

CA RE License #02018499

theeoniccompany.com